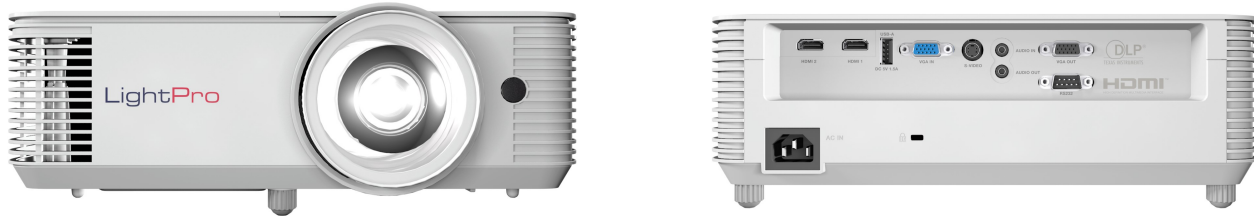


IN0026ST



An outstanding price-performance all-rounder, the InFocus Genesis III Series combines ultra-long lamp life, high brightness, and superb connectivity in one compact package. They are designed for tight budgets, so you don't have to sacrifice image quality or performance.

The InFocus Genesis III Series truly offers the best of both worlds: affordability and excellent projection capabilities, making it the perfect choice for cost-conscious users who demand excellence.

Features

Industry-leading 15000 hours of lamp life

Our lamps are designed to last longer, ensuring extended durability and long-term performance. This exceptional longevity reduces the need for replacements, offering unparalleled reliability and cost savings over time.

Comprehensive range of resolutions from SVGA to WUXGA

Enjoy the flexibility and versatility needed to handle any projection scenario, ensuring your visuals are always crisp, clear, and impactful.

Eco-Friendly with Minimal Maintenance and Filter-Free

With minimal maintenance and no filter to replace, this means less waste and reduced environmental impact contributing to sustainability for a greener future while providing reliable and consistent performance.

Outstanding 30000:1 Contrast Ratio for Better Visual Quality

Indulge in a vivid, clear visual feast with enhanced image clarity and better details with deeper blacks, brighter whites and more vibrant colours.

Seamlessly switching between different devices

Easily connect to multiple sources and switch effortlessly between the devices for your projection needs ensuring a hassle-free viewing experience and enhancing overall performance.

Bright, Vivid Images on Any Surface

Transform any room into a dynamic visual space even in well-lit rooms. With 4000 lumens on standard throw models and 3800 lumens on short throw models, image colours and details are crisp and clear.

Make Bigger Impact With Short Throw Models

Pair short-throw models with interactive whiteboards in classrooms to elevate lessons visually and improve class engagement.

Direct Power On/ Direct Power Off

No more waiting. The projector instantly powers up when it receives an electric current. When you are finished, simply switch off the power, no need for lengthy cooling period to shut it down.

Advanced Digital Image Correction

With the new digital edge masking and image shift features, we make perfecting those final image adjustments easy.

24/7 Operation

The Genesis IV Series is designed for 24/7 operations in standard orientation and is ideal for applications requiring extended projection periods.

USB-A Power for Devices

The integrated USB-A power source conveniently powers HDMI devices like Google Chromecast or a wireless dongle to enhance presentation performance.

Full 3D Capability

Captivate the audience with 3D content from almost any 3D source, including 3D Blu-ray players and the latest game consoles.

Lightweight and Portable

Its compact and light form makes it portable, giving you flexibility for different uses.

Image

Projection Technology	Texas Instruments DLP®
Panel Size	0.65" DMD
Native Resolution	WXGA
Pixels	1280 x 800
Aspect Ratio	16:10
Contrast Ratio	30000:1
Brightness (Lumens)	3800
Light Source	UHP Lamp
Light Source Life Maximum Hours	15000
Maximum Supported Resolution	1920 x 1200
Horizontal Sync. Range (KHz)	15 ~ 97.55
Vertical Sync. Range (Hz)	54 ~ 85
Uniformity (%)	80

Optical

Lens	Fixed 1:1
Lens Zoom Adjustment	-
Optional Lenses	-
Image Offset (%)	112.4
Focal Length (mm)	7.15
F -Stop	2.8
Vertical Lens shift (%)	-
Horizontal Lens shift (%)	-
Keystone Adjustment	Manual
Vertical Keystone Correction	± 20°
Horizontal Keystone Correction	-
Projection Factor	0.52:1
Projection Distance (Meters/ Feet)	0.4 ~ 3.37 / 1.31 ~ 11.05
Optical Zoom	Fixed 1:1
Digital Zoom Demagnification / Magnification	0.8 ~ 2.0
Focus Adjustment	Manual

Connectivity

Inputs	Mini D-sub 15-pin (VGA), S-Video, HDMI™ 1.4, 3.5 mm Stereo Mini Jack, USB-A for Service
Outputs	3.5 mm Stereo Mini Jack, Powered USB-A for Wireless Dongle, Mini D-sub 15-pin (VGA)
Networking & Control	RS232
Embedded System	-
3D	Full 3D All Major Formats

Power

Power Supply	100 ~ 240 V AC; 50 ~ 60 Hz
Power Consumption Max (W)	267
Power Consumption Min (W)	210
Power Consumption Network Standby (W)	-
Power Consumption Standby (W)	<0.5

General

Product Dimensions (L x W x H) (mm / in)	313 x 236 x 96.4 / 12.4 x 9.3 x 3.8
Product Weight (Kilograms/ Pounds)	2.9 / 6.4
Packaged Dimensions (L x W x H) (mm / in)	395 x 337 x 166 / 15.6 x 13.3 x 6.5
Packaged Weight (Kilograms/ Pounds)	4.1 / 9.0
Fan Noise (dB)	27
Audio (W)	1 x 10
Operating Temperature (Celsius/Fahrenheit)	5 ~ 40 / 41 ~ 104
Operating Humidity (%)	10 ~ 85
Max Operating Altitude (meters / feet)	3048 / 10000
Storage Temperature (Celsius/ Fahrenheit)	-10 ~ 60 / 14 ~ 140
Storage Humidity (%)	10 ~ 85
Security	Kensington Security Slot™, PIN Code Lock & Timer
Safety and Regulatory	CB, CE, EAC, cTUVus, CCC, FCC, UKCA, NOM, PSB, BIS
Environmental	WEEE, EU RoHS, China RoHS, CEL, CECP

Copyright © 2025, InFocus and its logo is a registered trademark of InFocus Corporation. Maxnerva Technology Services Limited is the licensee of the registered trademark. All other product names and company names used herein are for identification purposes only and may be trademarks or registered trademarks of their respective owners. Errors and omissions excepted; all specifications are subject to change without notice. All images are for representation purposes only and may be simulated.